



Boundaries Erased- Knowledge Unleashed- Minds Empowered

The Novel Digital University Model

White Paper

Version 2.0

©2025

Foreword

It is with great pleasure and enthusiasm that I introduce the white paper for the “**Elon Musk University of East Africa**,” EMUEA in short; a pioneering novel digital university model committed to transforming the landscape of education in the region and globally. In an era where access to quality education remains a challenge for many mainly due to the skyrocketing of the study cost year after year and students heavily indebted all around the globe; our vision is to break down barriers and provide free and affordable learning opportunities, particularly for the underprivileged and those who want and wish to study while still doing their routine bread-earning endeavors.

You will understand some people saying that education is useless in our days. They base this erroneous belief on the fact that they see some people doing jobs not related to their areas of studies or struggling to secure a job position. Fortunately or unfortunately for them; these are people who, for some reasons, may have missed access to it. Even if you don't get employed directly in your field of specialization, education shapes your mind to handle complex situations—not only within your area of study but also beyond it. It equips you with the cognitive tools and flexibility needed for self-actualization in diverse fields, enabling you to adapt and move forward in life. At our University we believe that education is the cornerstone of progress either individually or collectively as a society. You couldn't have been able to speak and write even in your mother tongue if no one taught you how to do it. The **Elon Musk University of East Africa** aims to be a beacon of knowledge, accessible to all, regardless of socio-economic background. We understand the transformative power of education and believe that everyone, irrespective of their circumstances, deserves a chance to pursue their academic aspirations.

At the heart of our mission lies a commitment to revolutionize higher education through **Placement Based Education for Impact (PBEI)**. We recognize the evolving needs of today's industries and the critical role that practical, context-driven learning plays in preparing graduates for real-world challenges. By harnessing the power of digital technology, we aim to deliver innovative and flexible learning experiences that connect knowledge with lived practice.

This approach—termed **PBEI**—integrates online modules with structured placements in relevant organizations, enabling students to learn by doing, while reflecting critically on their experiences. Instead of rigid syllabi, we embrace a **modular, syllabi-free framework**, where learners progress through tailored learning units guided by mentors and industry contexts. This ensures education is not constrained by examinations, but driven by **deep understanding, critical thinking, and practical application**. Through carefully designed modules, interactive digital platforms, and partnerships with workplaces and communities, we are **redefining the**

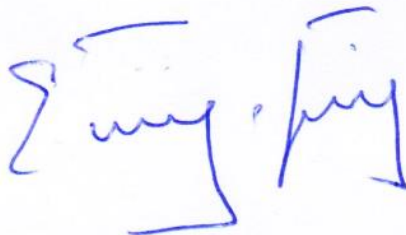
boundaries of distance and experiential learning. A comprehensive blueprint of this methodology will be elaborated and scientifically justified in this whitepaper. Furthermore, variants of this model will be extended to other disciplines where impact-driven practical learning is essential.

The **Elon Musk University of East Africa (EMUEA)** emerges from this fertile ground of aspiration, not as a monolithic edifice, but as a digital oasis, accessible, affordable and free. We envision a landscape where aspiring scientists, engineers, educators, academics, researchers, nurses, doctors, and allied healthcare professionals, unburdened by financial constraints, can quench their thirst for knowledge and blossom into skilled contributors to their communities.

In the spirit of innovation that defines our namesake, **Elon Musk**, we embrace the challenge of pushing educational boundaries. Our commitment to excellence is reflected in our unwavering belief that education should be a transformative force, empowering individuals to make a positive impact in their communities. As you delve into the details of this white paper, we invite you to join us on this exciting journey towards a future where education knows no bounds.

Welcome to the educational revolution. Welcome to **EMUEA**.

Sincerely,



Dr. Evariste Erwin Sebahutu, PhD, MPH

Founder & Project Lead

Elon Musk University of East Africa (EMUEA)

erwin.ndaruhutse@gmail.com or chancellor@emuea-edu.org

Phone: +250 786 007 344

Table of Contents

Executive Summary	6
1. Problem statement.....	7
2. University mission and Vision.....	9
2.1. Mission.....	9
2.2. Vision.....	9
3. University digital infrastructure	10
3.1. Landing Website	10
3.2. University Management System (UMS).....	10
3.3. Learning Management System (LMS).....	10
3.4. Digital Library	10
3.5. Online Examination Proctoring System.....	11
3.6. University Social Network.....	11
3.7. University research journal and theses repository	11
4. Teaching and Learning approaches.....	12
4.1. Principles.....	12
4.2. Standards.....	13
4.3. Continuous Improvement.....	13
4.4. Practices	13
5. Pharmacy, Health Science and Allied Health Sciences Education	14
5.1. Hybrid Health Sciences Education: A Transformative Solution	15
5.1.1. Addressing the Healthcare Workforce Shortage.....	15
5.1.2. Seamless Integration of Online Learning and Practical Experience	15
5.2. Key Features of Hybrid Health Sciences Education	16
5.3. Benefits of Hybrid Health Sciences Education.....	16
4. Curriculum Design and Innovation.....	17
5. Practical Learning Partnerships	18
a. Key Elements of Practical Learning Partnerships.....	19
b. Benefits of Practical Learning Partnerships.....	20
6. Accessibility and Affordability Initiatives	21
a. Key Elements of Access and Affordability Initiatives.....	21
b. Benefits of Access and Affordability Initiatives	22

7.	Impact on Underprivileged Communities	23
a.	Key Initiatives and Programs	24
b.	Anticipated Impact	24
8.	Funding approaches	25
a.	Key Funding Streams.....	26
b.	Allocation of Funds.....	27
c.	Transparency and Accountability	27
11.	Administration and Implementation: Nurturing Growth and Expertise.....	28
11.1.	Foundational Administration	28
11.2.	Administrative Hierarchy Development	28
11.3.	Commencement of Operations (2026)	29
11.4.	Appointment of Qualified Academics	29
11.5.	Operational Efficiency and Flexibility	30
12.	Other Future Perspectives: Paving the Way for Physical Presence	30

Executive Summary

Our visionary undertaking, the yet-to-be-named university, is set to redefine the landscape of higher education by prioritizing accessibility, innovation, and expertise. Founded with a commitment to providing free and affordable learning opportunities, our not-for-profit institution will commence operations in September 2026 under the stewardship of its founder. In the initial phase, the administration will be led by the founder, who brings a wealth of expertise in public health. This foundational period will prioritize agility and responsiveness, laying the groundwork for a streamlined administrative hierarchy as the institution grows.

The strategic focus on the School of Public Health and the school of pharmacy at the outset reflects our commitment to impactful education rooted in real-world challenges. This flagship schools will serve as the nucleus of our academic endeavors, delivering rigorous programs and fostering groundbreaking research under the founder's leadership. Sequential expansions will follow as qualified academics join our ranks, bringing diverse expertise that shapes the establishment of new schools. Our commitment to technology integration and adaptive governance structures ensures operational efficiency, flexibility, and a forward-thinking approach to education.

As our university evolves, it aspires to become a beacon of accessible and quality education, fostering a dynamic learning environment where students from all walks of life can pursue their academic aspirations. The administration's phased approach, from the founder-led foundational stage to the development of a structured hierarchy, reflects our dedication to creating a sustainable and innovative institution that prepares students for the challenges of the 21st century.

1. Problem statement

Access to higher education has long been considered a cornerstone for personal and societal advancement, yet persistent issues surrounding accessibility, costs, and student debts have created barriers for many aspiring learners. The current educational landscape reflects a stark reality of disparities in access, with socio-economic factors often determining who can pursue higher education. Initiatives aimed at broadening access must go beyond limited, selective and competitive financial aid and scholarships; addressing systemic inequalities in primary and secondary education that contribute to the educational divide. Additionally, innovative online platforms and flexible learning options can provide more accessible avenues for diverse learners, reducing the traditional barriers associated with physical location and scheduling especially in tertiary education.

The soaring costs of higher education have become a formidable obstacle for countless students, leading to a surge in student debt burdens. The financial strain imposed by tuition, textbooks, and living expenses can discourage prospective students from pursuing further education or force them into the burden of loans. Addressing this issue requires a multi-faceted approach, involving governmental intervention, institutional reforms, and collaborative efforts with private sectors. Policymakers must explore sustainable funding models and initiatives to alleviate the financial strain on students and promote a more equitable educational system.

The burgeoning student debt crisis is an urgent concern that necessitates strategic solutions to prevent long-term economic repercussions. Governments and educational institutions must work collaboratively to develop comprehensive debt relief programs, refinancing options, and financial literacy initiatives to empower graduates in managing their loans responsibly. Furthermore, there is a growing need to reassess the value of a college degree in relation to employability and the evolving job market. Encouraging alternative pathways, such as vocational training, apprenticeships, and certification programs, can provide viable options for those who seek to enter the workforce without shouldering the weight of substantial student loans.

It can be reiterated that reimagining higher education requires a concerted effort to enhance access, mitigate costs, and alleviate the burden of student debts. A holistic approach involves systemic changes, policy reforms, and a shift in societal perceptions about the diverse paths to success. By prioritizing accessibility, implementing innovative financial models, and fostering a

culture that values different forms of education, we can strive towards a more inclusive and equitable higher education system that empowers all individuals, regardless of their socio-economic background, to pursue and benefit from advanced learning opportunities.

Recognizing the prevailing acknowledgment that the current educational system places a strong emphasis on learners passively absorbing pre-packaged information to attain grades, it becomes evident that distance and asynchronous learning present a favorable alternative. In contrast to the traditional model, distance and asynchronous learning methodologies lend themselves to self-instruction, empowering learners to take charge of their educational journey through assisted self-learning. This shift not only acknowledges the diverse learning styles and paces of individual students but also fosters a more proactive and independent approach to acquiring knowledge.

Furthermore, this approach offers numerous advantages, such as the reduction of costly physical infrastructures typically associated with traditional educational settings. The demand for expansive campuses and facilities is significantly diminished, leading to substantial cost savings. Additionally, the asynchronous nature of this learning model allows for a more flexible student-to-faculty ratio, mitigating the need for a large number of educators and, consequently, reducing expenditures related to faculty salaries. As a result, distance and asynchronous learning emerge as an optimal choice whenever the goal is to provide learning that is not only free and affordable but also easily accessible to a broader demographic of learners. This cost-effective and scalable educational model aligns with the evolving needs of a dynamic and inclusive learning environment.

Elon Musk University of East Africa comes as a solution to costs and geographical barriers. Through its innovative digital campus, the university will provide free and affordable education hence bringing higher education to villages and households especially benefiting underprivileged aspiring learners. Contrary to, or at least in addition to, traditional lecture-based education, the university is committed to fostering **actively assisted self-learning**. Rather than relying on rigid syllabi and the learn-for-grade mindset, our model emphasizes a **syllabi-free, modular approach** where students engage with knowledge in dynamic and context-driven ways. Learning is guided, not dictated, with mentors supporting students in building understanding rather than memorizing content.

Through our framework of **Placement Based Education for Impact (PBEI)**, students integrate modular learning with real-world practice in workplaces and communities. This ensures that education is not only theoretical but deeply connected to lived experience, creating a cycle of learning, reflection, and application. By prioritizing understanding, critical thinking, and impact over examinations, we are confident that this approach will nurture **innovative problem-solvers and future think-tanks**, capable of shaping meaningful change in society.

2. University mission and Vision

2.1. Mission

Our Mission at **Elon Musk University of East Africa** is to provide free, affordable and accessible education to underprivileged individuals across East Africa and worldwide. We are dedicated to breaking down the barriers that hinder educational opportunities for underprivileged communities. Our mission is rooted in the belief that education is a powerful tool for social and economic empowerment. We strive to equip our students with the knowledge, skills, and values necessary to drive positive change in their communities and contribute to sustainable development. Through innovative teaching methods, strategic partnerships, and personalized support, we aim to empower individuals to realize their full potential and become catalysts for transformative impact in East Africa and beyond.

2.2. Vision

Our Vision at **Elon Musk University of East Africa** is to create a transformative educational experience that empowers individuals and drives sustainable development in East Africa and worldwide. We envision a future where access to high-quality education is a fundamental right, regardless of socioeconomic background. We strive to be a catalyst for change, nurturing a generation of innovative thinkers, problem solvers, and leaders who will shape the future of the region. Through our commitment to cutting-edge technologies, entrepreneurship, and sustainability, we aim to foster a culture of creativity, collaboration, and positive impact. Our vision is to be a beacon of hope and opportunity, unlocking the potential of East Africa and the world and inspiring a global movement towards inclusive education and social progress.

3. University digital infrastructure

In establishing our digital university, a robust and integrated infrastructure is essential to provide a seamless and comprehensive educational experience for students and educators alike. Our digital ecosystem comprises key components, each meticulously designed to enhance accessibility, streamline administrative processes, and facilitate effective learning outcomes.

3.1. Landing Website

The gateway to our digital university is a user-friendly landing website, designed to be informative, intuitive, and visually engaging. This web interface serves as the primary point of access for students, faculty, and visitors, offering essential information about programs, admissions, and the overall university experience. The landing website is optimized for responsiveness across devices, ensuring a consistent and accessible experience for all users.

3.2. University Management System (UMS)

At the core of our digital infrastructure is the University Management System (UMS), a comprehensive platform designed to automate and streamline administrative tasks. The UMS integrates functionalities such as student enrollment, course scheduling, financial management, and personnel administration. This centralized system enhances efficiency, reduces manual workload, and provides real-time data insights for informed decision-making at both strategic and operational levels.

3.3. Learning Management System (LMS)

Facilitating dynamic and interactive learning experiences, our Learning Management System (LMS) is a versatile platform that supports course content delivery, assessments, and collaborative activities. The LMS ensures a flexible and adaptive learning environment, accommodating diverse instructional formats such as video lectures, interactive quizzes, discussion forums, and virtual classrooms. Personalized dashboards for students and educators optimize the learning journey and streamline communication channels.

3.4. Digital Library

Our digital library is a comprehensive repository of academic resources, accessible to all members of the university community. Offering a vast collection of e-books, research articles, multimedia content, and other scholarly materials, the digital library promotes research, self-

directed learning, and academic exploration. Advanced search functionalities and curated content categories enhance the efficiency of resource discovery, fostering a culture of continuous learning.

3.5. Online Examination Proctoring System

Ensuring the integrity and security of online assessments, our Online Examination Proctoring System employs advanced technologies to monitor and authenticate examination sessions. This system includes features such as facial recognition, screen monitoring, and keystroke analysis to uphold academic standards and prevent malpractice. The secure and transparent examination environment provides students with a fair and credible evaluation process in the digital realm.

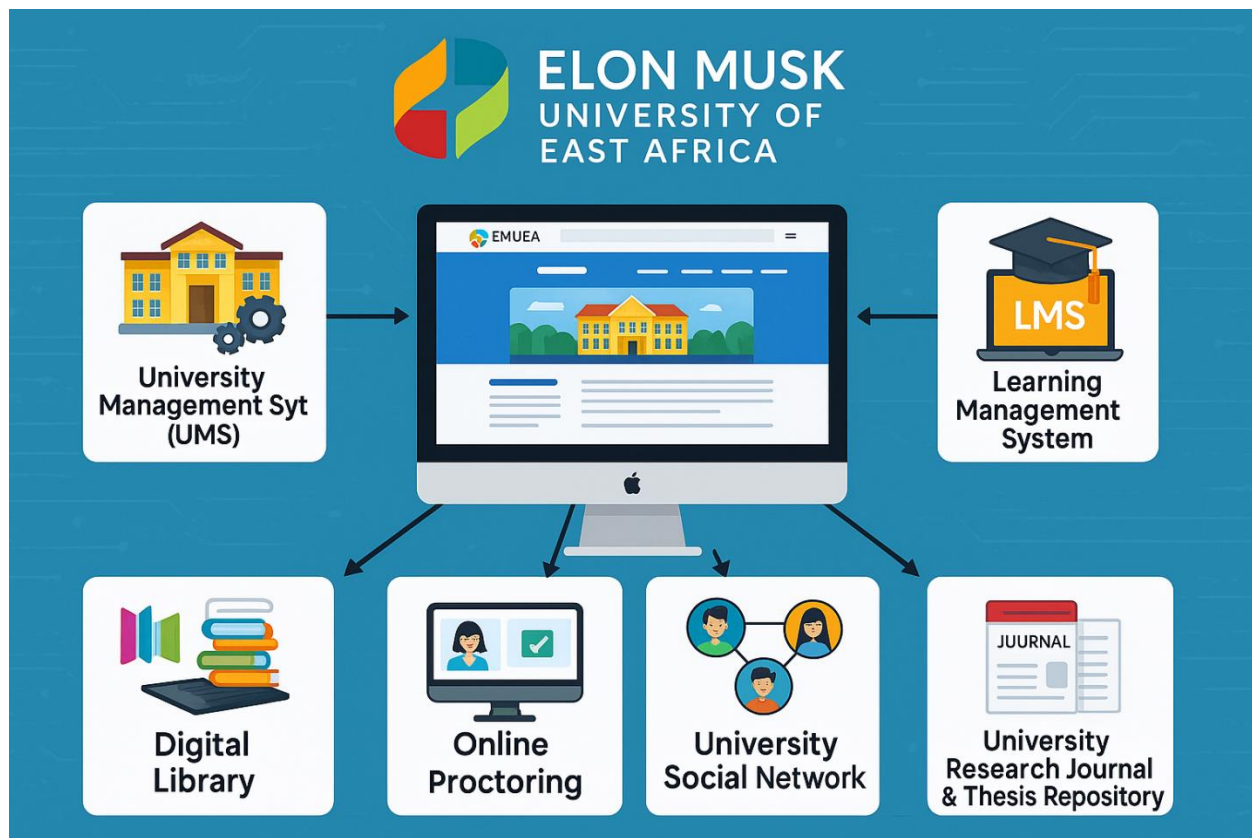
3.6. University Social Network

A University Social Network is a vital component of our digital infrastructure, designed to foster collaborative work and meaningful interactions among students, faculty, and staff. Functioning as an academic social media platform, it enables users to form study groups, share academic content, discuss ideas, and collaborate on projects in real time. This network strengthens the sense of community within the university and promotes engagement beyond the boundaries of formal coursework. By encouraging peer-to-peer support and academic networking, it complements both learning and administrative systems, enriching the overall digital campus experience.

3.7. University research journal and theses repository

Our **University Research Journal and Theses Repository** will be a dedicated platform to publish, archive, and showcase the intellectual output of our community. This open-access resource will not only provide global visibility to student theses and faculty research but also serve as a living library of innovation, enabling knowledge sharing, collaboration, and academic impact beyond the university walls.

In amalgamating these components, our digital university infrastructure is poised to deliver a transformative educational experience that transcends geographical boundaries. The synergy of these elements not only ensures operational efficiency but also fosters an engaging and inclusive learning environment, aligning with the evolving landscape of contemporary education.



4. Teaching and Learning approaches

Our university is committed to fostering a culture of **actively assisted self-learning** that empowers students to take ownership of their educational journey. Instead of relying on rigid syllabi and grade-driven instruction, we emphasize a **modular, syllabi-free approach** where learners engage with knowledge dynamically and contextually. Faculty members act as **facilitators and mentors**, supporting students as they explore curated resources and apply learning through real-world placements. To enhance accessibility, we deliberately curate and organize **Creative Commons and open educational resources (OER)**, blending them with faculty-developed materials to provide structured yet flexible pathways. This approach ensures that students move beyond memorization to **understanding, critical reflection, and application**, consistent with our **Placement Based Education for Impact (PBEI)** framework.

4.1. Principles

 **Facilitated Self-Learning:**

- Position instructors as mentors who guide students to become self-directed learners capable of integrating theory with practice.
- Encourage exploration of diverse resources, reflective practices, and placement-based experiences that deepen both academic and practical understanding.

Creative Commons Digital Learning Materials:

- Promote the adoption of OER and Creative Commons resources to expand access, reduce costs, and foster a spirit of openness.
- Encourage faculty and students to contribute new knowledge and share materials under open licenses, reinforcing our commitment to collaborative knowledge creation.

4.2. Standards

Personalized Learning Pathways

- Enable individualized learning plans aligned with student strengths, interests, and career goals.
- Ensure that modular learning materials adapt to varied paces and styles, granting students autonomy in shaping their educational journey.

Placement Integration

- Align digital modules with real-world placements, ensuring that learning outcomes are measurable in terms of impact rather than examination scores.
- Support reflective integration of workplace experiences into academic growth.

4.3. Continuous Improvement

- Encourage faculty to refine and adapt materials based on student feedback, industry needs, and evolving digital tools.
- Foster peer review and co-creation of resources, ensuring quality and relevance remain central to our mission.

4.4. Practices

Digital Learning Material Repositories

- Maintain a centralized, open repository of Creative Commons and faculty-developed resources for easy access and sharing.

- Showcase exemplary materials and best practices to enrich the collective learning ecosystem.

Interactive and Engaging Content:

- Encourage the design of multimedia-rich and interactive content that promotes inquiry, collaboration, and problem-solving.
- Support cross-disciplinary collaboration among instructors to build innovative modules that transcend traditional subject boundaries.

Community of Practice:

- Build a vibrant community where faculty, students, and partners exchange insights, co-develop content, and collectively advance the culture of self-learning.
- Recognize contributions to open education and placement-driven innovation, reinforcing a culture of impact-oriented learning.

By integrating these principles, standards, and practices, our university is redefining digital teaching and learning. Through **actively assisted self-learning, syllabi-free modular pathways, and placement-based education**, we aim to cultivate learners who are not only knowledgeable but also adaptable, innovative, and capable of driving meaningful change in their communities and beyond.

5. Pharmacy, Health Science and Allied Health Sciences Education

The urgent shortage of healthcare professionals highlights the need for an innovative approach to Pharmacy, Health Science, and Allied Health Sciences education. Beyond simply increasing the number of trained practitioners, there is a clear imperative to reimagine how health education is delivered so that graduates are both competent and impact-driven.

Our solution is **Hybrid Health Sciences Education**, rooted in the university's broader philosophy of **Placement Based Education for Impact (PBEI)**. This model blends the accessibility of online, syllabi-free modular learning with placement-based clinical practice in nearby health facilities. Students are guided through actively assisted self-learning, engaging with curated open educational resources alongside faculty-developed content, while applying their knowledge directly in supervised clinical settings.

By embedding placements at the core of the learning process, students integrate theory with practice in real time; ensuring education is not only academically rigorous but socially and professionally relevant. This approach cultivates healthcare professionals who are adaptable, reflective, and prepared to meet the evolving demands of health systems. Through **Hybrid Health Sciences Education** powered by **PBEI**, we aim to provide a scalable, sustainable, and impactful model that both addresses the workforce shortage and redefines the future of health sciences education.

5.1. Hybrid Health Sciences Education: A Transformative Solution

5.1.1. Addressing the Healthcare Workforce Shortage

The shortage of healthcare professionals has created a pressing demand for an educational model that produces graduates who are not only skilled but also deeply connected to their communities. Hybrid Health Sciences Education, designed within our framework of Placement Based Education for Impact (PBEI), emerges as an innovative and timely solution to this challenge.

By combining modular, syllabi-free digital learning with placement-based training in local health facilities, this model ensures that students acquire both knowledge and competence in real-world contexts. Crucially, the emphasis on community-rooted placements builds strong ties between learners and their local environments. Evidence suggests that professionals trained within their communities are more likely to remain and serve in those same areas, addressing workforce shortages while fostering continuity, trust, and improved healthcare outcomes. Thus, Hybrid Health Sciences Education aligns academic development with community health needs, creating sustainable and socially impactful results.

5.1.2. Seamless Integration of Online Learning and Practical Experience

Hybrid Health Sciences Education leverages the flexibility of facilitated online self-learning—supported by curated Creative Commons resources and faculty guidance—while embedding students in practical placements at nearby health facilities. This dual structure allows learners to engage with theory at their own pace, reflect critically on their learning, and immediately translate knowledge into practice under professional supervision. The integration of theory, practice, and reflection develops graduates who are both competent and impact-ready, able to respond effectively to the evolving challenges of healthcare systems.

5.2. Key Features of Hybrid Health Sciences Education

1. Syllabi-Free Modular Learning

- Flexible, interactive modules that emphasize understanding and critical thinking over memorization and examinations.
- Access to multimedia-rich Creative Commons and faculty-developed content, adaptable to diverse learning paces and needs.

2. Placement-Based Learning (PBEI)

- Structured partnerships with healthcare facilities to provide clinical rotations, internships, and supervised practice.
- Integration of reflective exercises to connect theoretical insights with real-world patient care.

3. Technology-Enhanced Simulations

- Use of virtual laboratories, simulations, and digital case studies to supplement clinical exposure.
- Safe environments for experimentation and bridging theory with hands-on practice.

5.3. Benefits of Hybrid Health Sciences Education

1. Enhanced Accessibility

- Expands access to quality education across geographic and economic boundaries, empowering a broader and more diverse student body.

2. Holistic Skill Development

- Cultivates healthcare professionals with strong foundations in theory, practice, reflection, and problem-solving—prepared for the complex demands of modern healthcare.

3. Community Impact

- Strengthens the local healthcare workforce by retaining graduates in their training communities.
- Improves trust and continuity in service delivery, advancing both community health and workforce sustainability.

In conclusion, Hybrid Health Sciences Education, powered by the **PBEI framework**, represents a paradigm shift in educating future healthcare professionals. By uniting **actively assisted self-learning**, **syllabi-free modular pathways**, and **placement-based practice**, this model prepares graduates who are not only career-ready but also positioned to make lasting contributions to the health and well-being of their communities.

4. Curriculum Design and Innovation

In alignment with global best practices and in pursuit of educational excellence, our university adopts an **innovative curriculum design** that integrates flexibility, impact, and relevance. Grounded in the principles of **actively assisted self-learning** and **Placement Based Education for Impact (PBEI)**, our curriculum moves away from rigid syllabi and grade-driven instruction to focus on **modular learning**, **real-world application**, and **reflective practice**. The core pillars of our curriculum are **personalized learning**, **practical engagement**, and **a global outlook**, equipping students to thrive in the 21st century.

Digital Learning Environment

- ✓ Replace traditional lecture-based delivery with **facilitated online learning** that emphasizes self-directed exploration with guided support.
- ✓ Provide interactive, multimedia-rich modules curated from **Creative Commons** and faculty-developed resources, ensuring adaptability and accessibility.

Competency-Based Framework

- ✓ Shift the emphasis from credit hours and examinations to **competency and impact-based assessments**, where understanding and application are prioritized.
- ✓ Enable students to progress at their own pace, ensuring mastery of core skills while linking outcomes to **community and workplace impact**.

Interdisciplinary Pathways

- ✓ Promote interdisciplinary collaboration to prepare students for complex, real-world challenges.
- ✓ Integrate modular content across fields, encouraging learners to synthesize knowledge into **holistic understanding and innovative solutions**.

Placement-Based and Project-Based Learning

- ✓ Embed **structured placements** in relevant workplaces and communities as a core feature of the curriculum, enabling direct application of knowledge.
- ✓ Incorporate project-based learning and reflective inquiry to develop critical thinking, creativity, and problem-solving skills.

Global Citizenship Focus

- ✓ Infuse global perspectives through international collaborations, cultural exchange opportunities, and globally relevant content.
- ✓ Cultivate **intercultural competencies and ethical awareness**, preparing students for leadership in a diverse and interconnected world.

Inquiry-Driven Curriculum

- ✓ Foster curiosity and innovation through research-oriented projects, independent studies, and student-led initiatives.
- ✓ Encourage learners to **question, explore, and contribute to knowledge creation**, building a culture of intellectual independence.

Our university's curriculum design represents a **syllabi-free, modular, and impact-oriented model** that redefines how education is delivered. By combining **digital flexibility, placement-based practice, interdisciplinary breadth, and global engagement**, we are creating a learning ecosystem that not only empowers students with knowledge but also equips them with the skills, mindset, and impact orientation needed to shape the future.

5. Practical Learning Partnerships

Recognizing that meaningful education must extend beyond classrooms and digital platforms, our university places a strong emphasis on Practical Learning Partnerships. These partnerships are at the core of our **Placement Based Education for Impact (PBEI) model**, ensuring that students consistently integrate knowledge with lived experience. Through collaborations with industry, community organizations, healthcare providers, and research institutions, students engage in structured placements, internships, and project-based initiatives that bridge the gap between theory and practice. This direct exposure not only strengthens professional competence but also deepens students' sense of responsibility and impact within their communities.

By embedding practical learning into the curriculum, we cultivate graduates who are not just academically accomplished but also workplace-ready, socially responsive, and innovation-driven. These partnerships create a symbiotic relationship between the university and its stakeholders—where students gain invaluable skills while organizations benefit from fresh perspectives and solutions.

a. Key Elements of Practical Learning Partnerships

Industry Integration

- Forge strategic alliances with industry leaders, businesses, and professionals relevant to each discipline.
- Facilitate internships, apprenticeships, and industry-sponsored projects that expose students to the practical challenges and opportunities within their field of study.

Community Engagement

- Collaborate with local communities to create service-learning opportunities.
- Develop projects and initiatives that allow students to apply their skills and knowledge to address real community needs, fostering a sense of civic responsibility.

Research Collaborations

- Establish partnerships with research institutions and laboratories.
- Provide students with opportunities to engage in cutting-edge research projects, contributing to advancements in their respective fields.

Entrepreneurial Ventures

- Encourage partnerships with startup incubators, accelerators, and entrepreneurial networks.
- Support students in developing their own ventures, fostering an entrepreneurial mindset and practical business acumen.

Global Experiences

- Facilitate international partnerships for cross-cultural exchanges and global learning experiences.

- Enable students to broaden their perspectives and adaptability by engaging with diverse cultures and global challenges.

b. Benefits of Practical Learning Partnerships

Enhanced Skill Development

- Provide students with the opportunity to apply theoretical knowledge in real-world settings.
- Develop practical skills, problem-solving abilities, and a deeper understanding of industry demands.

Professional Network Building

- Foster connections between students and professionals within their chosen industries.
- Facilitate mentorship opportunities and networking events to enhance career prospects.

Community Impact

- Empower students to contribute meaningfully to community development through service-learning projects.
- Instill a sense of social responsibility and ethical engagement in students.

Research Advancements

- Contribute to the advancement of knowledge and innovation through research collaborations.
- Enable students to participate in and contribute to groundbreaking research projects.

Preparation for Global Citizenship:

- Prepare students for a globally interconnected world by exposing them to diverse cultures and global challenges.
- Cultivate a global perspective that enhances adaptability and cultural intelligence.

Practical Learning Partnerships lie at the core of our commitment to providing a holistic and impactful education. By fostering collaborations that transcend traditional academic boundaries, our university aims to equip students with the practical skills, insights, and experiences that will

not only enrich their educational journey but also prepare them for success in their future careers and endeavors.

6. Accessibility and Affordability Initiatives

Recognizing the fundamental importance of equal access to education, our university is committed to implementing robust Access and Affordability Initiatives. These strategic measures aim to break down barriers that may hinder individuals from pursuing higher education, ensuring that a diverse range of students can benefit from the transformative power of learning. By focusing on affordability, inclusivity, and removing financial constraints, our initiatives seek to create a level playing field for all aspiring learners.

a. Key Elements of Access and Affordability Initiatives

Scholarship and Financial Aid Programs:

- Establish comprehensive scholarship programs based on merit, need, and diversity.
- Provide financial aid packages to alleviate the burden of tuition fees and related expenses for eligible students.

Tuition-Free Programs and Fee Reductions:

- Introduce tuition-free degree programs for specific fields or demographic groups.
- Implement fee reductions for online courses and programs to enhance affordability.

Flexible Payment Plans:

- Offer flexible payment options, including installment plans and deferred payment schemes.
- Provide financial counseling services to assist students in managing tuition payments effectively.

Open Educational Resources (OER):

- Promote the use of Open Educational Resources (OER) to reduce textbook and course material costs.
- Facilitate easy access to free or low-cost digital resources, enhancing affordability and eliminating financial barriers.

Work-Study Programs:

- Establish work-study opportunities that allow students to gain practical experience while funding their education.
- Collaborate with local businesses and organizations to create part-time employment opportunities for students.

Partnerships with Industry and Philanthropy:

- Form partnerships with industry stakeholders and philanthropic organizations to secure funding for scholarships and financial aid.
- Leverage external support to expand the reach and impact of affordability initiatives.

b. Benefits of Access and Affordability Initiatives

Diversity and Inclusivity

- Increase the diversity of the student body by removing financial barriers.
- Create an inclusive learning environment that reflects a broad range of perspectives and backgrounds.

Educational Equity

- Ensure that every qualified individual, regardless of socio-economic background, has an equal opportunity to pursue higher education.
- Address systemic inequalities in access to education and promote educational equity.

Reduced Student Debt

- Mitigate the burden of student loans by providing financial assistance and affordable education options.
- Empower students to focus on their studies without the undue stress of excessive debt.

Enhanced Career Opportunities

- Increase access to education for individuals who may have been previously excluded due to financial constraints.
- Equip a diverse workforce with the skills and knowledge needed to excel in their chosen fields, contributing to career advancement and economic mobility.

Our Access and Affordability Initiatives underscore the university's commitment to creating a more accessible and equitable educational landscape. By implementing these measures, we aspire to remove financial barriers, foster inclusivity, and empower individuals from all walks of life to pursue their educational aspirations without compromise.

7. Impact on Underprivileged Communities

Empowering Through Education

Our university is dedicated to making a meaningful impact on underprivileged communities by addressing educational disparities and fostering empowerment through education. By implementing targeted initiatives and community-engaged programs, we aim to break the cycle of socio-economic barriers and provide transformative educational opportunities to individuals in underprivileged communities.

a. Key Initiatives and Programs

Scholarship Programs for Underrepresented Groups

- Develop and promote scholarship programs specifically designed for individuals from underrepresented and economically disadvantaged backgrounds.
- Collaborate with community organizations to identify and support deserving candidates.

Partnerships with Local NGOs and Nonprofits

- Forge partnerships with local non-governmental organizations (NGOs) and nonprofits that specialize in community development.
- Coordinate joint initiatives to enhance educational infrastructure, provide scholarships, and offer vocational training.

Career Counseling and Guidance

- Implement career counseling and guidance programs to help individuals in underprivileged communities make informed decisions about their educational and career paths.
- Facilitate workshops and mentorship programs to instill confidence and empower participants to pursue higher education and professional opportunities.

b. Anticipated Impact

Breaking the Cycle of Poverty

- Empower individuals in underprivileged communities to break the cycle of poverty through access to quality education.
- Provide opportunities for skill development and knowledge acquisition that will open doors to better employment prospects.

Community Upliftment

- Contribute to the overall upliftment of underprivileged communities by investing in education that encourages learners to find innovative solutions to problems faced by their own neighborhood.
- Foster a culture of learning and academic achievement that positively impacts the community's social and economic well-being.

Increased Educational Attainment

- Increase the level of educational attainment in underprivileged communities, promoting a more educated and skilled workforce.
- Encourage a culture of lifelong learning and continuous personal development.

Empowered Individuals and Families

- Empower individuals within underprivileged communities to make informed choices about their educational and professional futures.
- Positively impact families by providing the means for parents and children to pursue education and enhance their quality of life.

8. Funding approaches

Our commitment to making a lasting impact on underprivileged communities through education reflects our belief in the transformative power of learning. By creating pathways to education and addressing specific needs within these communities, we strive to empower individuals, families, and entire communities to overcome challenges and build a brighter, more prosperous future. Our commitment to providing free and affordable learning opportunities hinges on establishing a sustainable funding model. As a not-for-profit institution, our primary sources of funding will be derived from charitable contributions, donations, fundraising initiatives, and modest administrative fees from students, with the overarching goal of ensuring financial accessibility for learners across diverse economic backgrounds.

a. Key Funding Streams

Charitable Contributions

- Cultivate relationships with philanthropic organizations, corporations, and individuals committed to advancing education.
- Seek grants and endowments from foundations aligned with our mission to support the continuous enhancement of our digital infrastructure and academic resources.

Donations and Alumni Support

- Encourage alumni and supporters to contribute to the university through one-time donations, recurring gifts, or establishing scholarship endowments.
- Develop targeted fundraising campaigns to engage alumni and the wider community in supporting our mission.

Fundraising Initiatives

- Organize fundraising events, both virtual and physical, to generate support from a wider audience.
- Leverage crowdfunding platforms and social media to amplify the impact of our fundraising initiatives.

Corporate Partnerships

- Forge strategic partnerships with corporations that share our commitment to education and digital innovation.
- Explore sponsorship opportunities, research collaborations, and joint initiatives that align with our educational mission.

Student Administrative Fees

- Implement a sliding scale for administrative fees based on students' economic capabilities.

- Ensure that no qualified student is barred from accessing education due to financial constraints by offering fee waivers and flexible payment plans.

b. Allocation of Funds

Digital Infrastructure Maintenance

- Allocate funds to maintain and enhance our digital infrastructure, ensuring a seamless and technologically advanced learning environment.
- Invest in cyber security measures, software updates, and infrastructure improvements to guarantee the security and efficiency of our online platforms.

Academic Talent Acquisition

- Allocate resources to attract and retain qualified academics through competitive salaries and professional development opportunities.
- Establish faculty support programs to encourage research, curriculum development, and innovation in teaching methods.

Student Support Services

- Dedicate funds to student support services, including counseling, career guidance, and academic advising.
- Ensure that resources are available to support students facing challenges in their educational journey.

Scholarship Programs

- Allocate a portion of funds to sustain scholarship programs for deserving students, facilitating their access to quality education.
- Establish a transparent and merit-based scholarship allocation process to maximize the impact on students' lives.

c. Transparency and Accountability

Financial Reporting

- Maintain transparency in financial operations through regular reporting and disclosure of budget allocation.
- Provide stakeholders with clear insights into how funds are utilized to support our educational mission.

Stakeholder Engagement

- Foster open communication with all stakeholders, including students, faculty, donors, and the wider community.
- Encourage feedback and involvement in decision-making processes related to funding allocation and financial strategies.

Our funding strategy is rooted in a collaborative approach that engages diverse stakeholders in supporting our not-for-profit mission. By combining charitable contributions, fundraising efforts, and thoughtful student fee structures, we aspire to create a sustainable financial ecosystem that ensures the continued accessibility and quality of education at our university.

11. Administration and Implementation: Nurturing Growth and Expertise

11.1. Foundational Administration

In its initial stage, the administration of our university rests with the founder, who plays a pivotal role in establishing the institution's vision, values, and operational framework. As the primary decision-maker, the founder oversees all administrative aspects, including strategic planning, resource allocation, and initial program development. Recognizing the foundational nature of this phase, administrative responsibilities will be agile and responsive, allowing for swift adaptation to emerging needs and opportunities.

11.2. Administrative Hierarchy Development

As the institution matures, a clear administrative hierarchy will be implemented to streamline operations and promote effective governance. This hierarchy will evolve to include key leadership positions such as Vice Presidents/chancellors, Deans of Schools, and administrative

staff responsible for specific functions. This structured approach will ensure efficient decision-making processes, enhance accountability, and support the institution's overall growth.

11.3. Commencement of Operations (2026)

Initial Focus on the School of Public Health and School of Pharmacy

- The university will commence operations in September 2026, initially focusing on the School of Public Health and School of Pharmacy.
- Leveraging the founder's expertise, these schools will serve as the flagship academic unit, delivering high-quality education and research initiatives in public health.

Sequential Expansion of Schools

- Additional schools will be established incrementally as qualified academics come on board, bringing expertise in various disciplines.
- Each new school will undergo a meticulous development process, ensuring alignment with the university's mission, standards, and commitment to accessible education.

11.4. Appointment of Qualified Academics

Strategic Recruitment

- The recruitment of qualified academics will be strategic, emphasizing individuals who align with the university's values, educational philosophy, and commitment to innovation.
- A transparent and merit-based recruitment process will be established to ensure the selection of educators dedicated to fostering a dynamic and inclusive learning environment.

Expertise-Based School Expansion

- The addition of new schools will be guided by the expertise and interests of the academics joining the institution.

- Schools will be introduced based on the identified needs and demands of the academic landscape, ensuring a balanced and comprehensive academic offering.

11.5. Operational Efficiency and Flexibility

Technology Integration

- Implement cutting-edge technologies to enhance administrative efficiency, communication, and the overall learning experience.
- Leverage digital platforms for administrative functions, admissions, student support services, and collaborative initiatives.

Adaptive Governance Structures

- Establish governance structures that can adapt to the evolving needs of the institution.
- Encourage a collaborative decision-making culture that values input from all stakeholders, fostering a sense of shared ownership and commitment.

The administration and implementation plan reflect the university's commitment to a phased and thoughtful approach, acknowledging the foundational role of the founder while preparing for future growth. By prioritizing academic expertise, operational efficiency, and adaptability, the institution aims to create a dynamic and responsive learning environment that aligns with its overarching mission and vision.

12. Other Future Perspectives: Paving the Way for Physical Presence

As our university embarks on its digital journey, the vision extends beyond the virtual realm towards the establishment of a physical headquarters that aligns with our commitment to excellence and growth. While the initial phase involves a 100% digital presence with virtual offices, our future perspectives include the construction of a dedicated physical headquarters as funds become available. This development marks a significant milestone in our evolution, reinforcing our commitment to providing a comprehensive and dynamic educational experience.

The envisaged physical headquarters will serve as a hub for academic, administrative, and collaborative activities, fostering a tangible sense of community and connection among students, faculty, and staff. This physical presence will not only solidify our institution's footprint but also provide a centralized space for research, innovation, and face-to-face interactions. Moreover, the relocation of key infrastructures from third-party providers to our dedicated physical space underscores our commitment to data security, privacy, and enhanced control over our digital assets.

The establishment of a physical headquarters represents a strategic investment in the long-term sustainability and resilience of our institution. This forward-looking approach ensures that we can adapt to evolving educational landscapes while maintaining the flexibility and innovation that define our digital presence. As we forge ahead, this physical expansion reflects our dedication to providing a holistic educational experience that seamlessly integrates both virtual and tangible elements, fostering a vibrant and inclusive learning community.